

Manual Thermostat [MTS3]

Features:

- Extremely simple to operate.
- On/Off switch.
- Temperature selection-dial.
- LED shows when the thermostat is calling for heat.
- Internal and floor sensors.



Technical Parameters:

Voltage:	230VAC 50/60Hz (Max 16amps)
Power Waste:	<2VA
Range of Temperature:	5°C ~ 40°C
Ambient Temperature:	-5°C ~ 50°C
Protective Casing:	IP20
External Sensor:	B-3380 10K@25°C
Lead Length:	3M
Casing Material:	Flame-retardant PC
Standard Installation Height:	1.2M
Installation Location:	Away from direct heating source and sunlight.

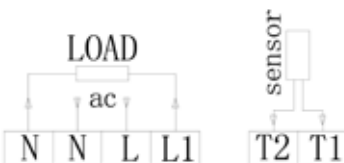
Floor Limiting Temperature Sensor Installation:

The sensor at the end of the floor probe should be situated mid way between 2 heating cables typically 4cm from each. Do not install the sensor over another heat source e.g. central heating pipe or the thermostat will not function correctly.

Temperature Setting and Control:

Adjust the temperature dial as required, the thermostat will automatically track and compare the current room temperature with the set temperature. When the room temperature is higher than the preset temperature, the thermostat will automatically disconnect the under floor heating. When the room temperature is lower than the set temperature, the thermostat will automatically switch on the heating.

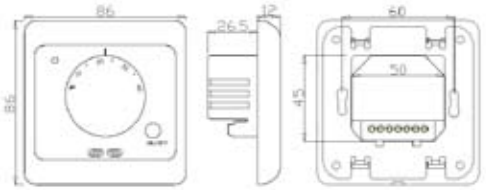
Wiring Diagram:



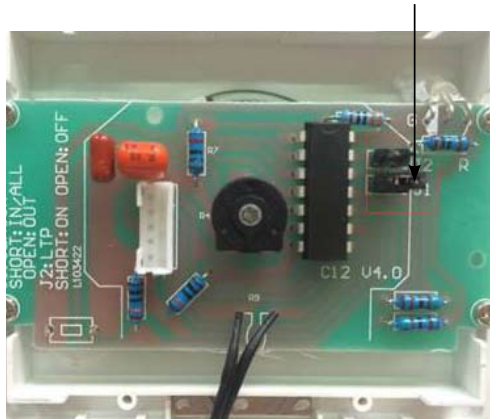
Mode Setting:

J1	Short without floor sensor connected, works with air sensor only.
J1*	Open with floor sensor connected, works with floor sensor only.
J2	Room frost protection - Short: On, Open: Off.

*FOR UNDERFLOOR HEATING



Jumper should not be on J1 (default) to work with floor probe.

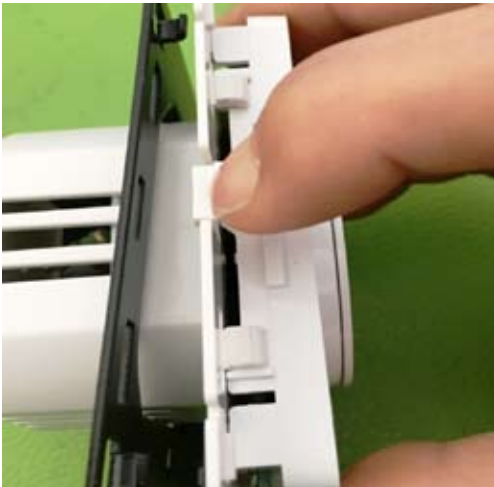


Mounting Instructions:

1. Remove Bezel from thermostat



2. Use flat screwdriver to press fixing clips and detach metal back plate.



3. Fix the metal back-plate to a 38mm deep wall box, wire up the unit as shown and reassemble.



Call 0113 2577 588 should you need assistance.