

## Technical Data Information

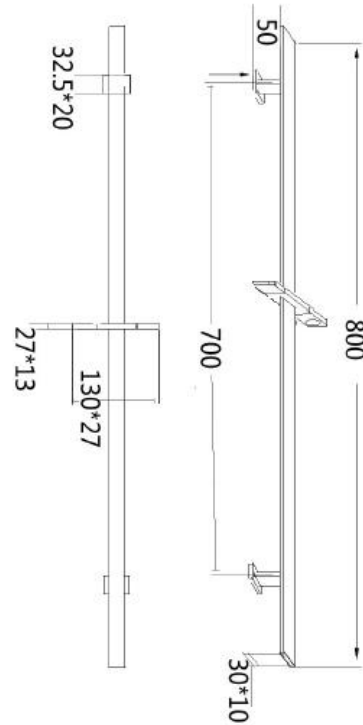
Square Black Slide Rail Large handset  
AVSR01AK

# R.T. LARGE

ESTABLISHED 1969



### SELECT BUTTON TECHNOLOGY



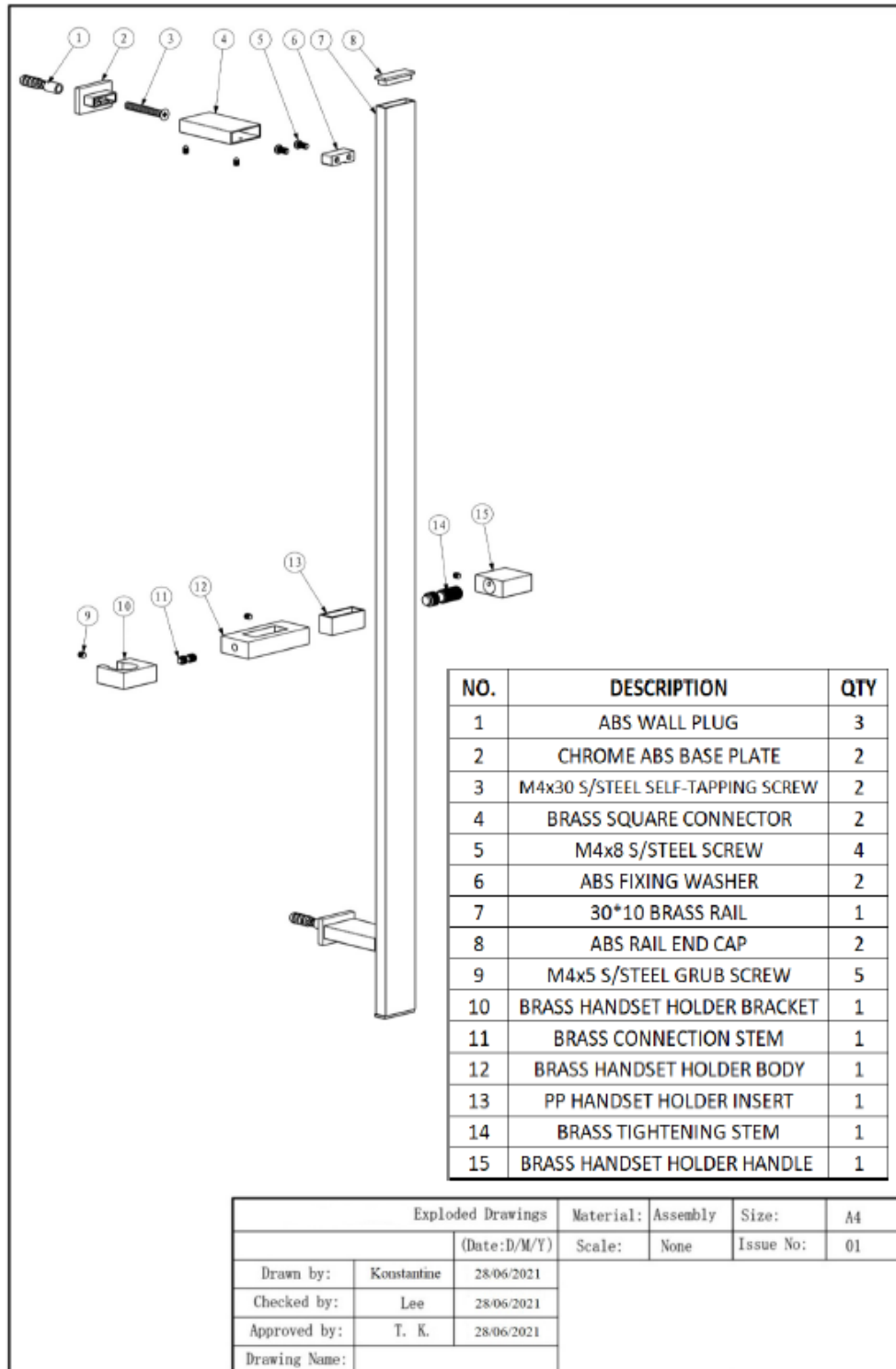
## INFORMATION

<b>Construction</b>	Brass, Stainless steel & ABS
<b>Finishes</b>	Matt Black/Electroplating Finish
<b>Product Type</b>	Contemporary
<b>Water Pressure</b>	Min. 0.5 bar, Max. 6.0 bar
<b>Plumbing Systems</b>	Suitable for all plumbing systems
<b>Packaging</b>	85.5 x 31 x 39.5cm / carton (10 boxes), Dimension: 83.5 x 14 x 7.5cm / box; Weight: 1.50Kg / box
<b>Guarantee</b>	1 year against manufacturing faults (excluding serviceable parts)
<b>Additional Information</b>	<ol style="list-style-type: none"><li>1. Brass 800mm Rail</li><li>2. ABS select 3 modes Shower handset</li><li>3. Adjustable brass handset holder</li><li>4. 1.5m smooth PVC shower hose</li></ol>

All Dimensions are in millimetres. The information contained on this page was correct at date of issue. Fitting dimensions are provided as a guide only. Some variation may occur due to manufacturing tolerances. We pursue a policy of continuing improvement in design and performance of our products and so reserve the right to change specifications without prior notice.

# R.T. LARGE

ESTABLISHED 1969



## Flow Rates (Litres per minute)

System Pressure	0.1 Bar	0.2 Bar	0.3 Bar	0.5 Bar	1.0 Bar	1.5 Bar	2.0 Bar	3.0 Bar	4.0 Bar	5.0 Bar
	3.8	4.7	-	6.9	11.3	-	-	-	-	-

All Dimensions are in millimetres. The information contained on this page was correct at date of issue. Fitting dimensions are provided as a guide only. Some variation may occur due to manufacturing tolerances. We pursue a policy of continuing improvement in design and performance of our products and so reserve the right to change specifications without prior notice.