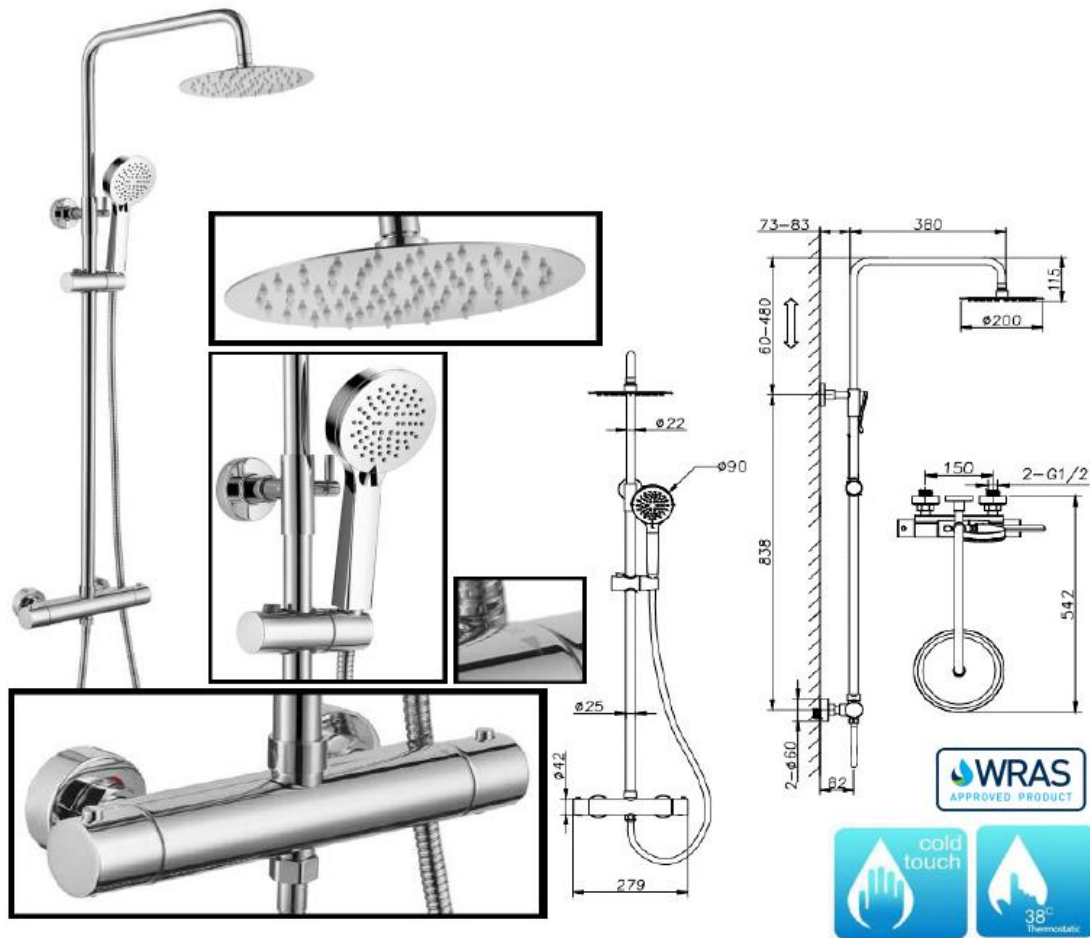


Technical Data Information

Round Chrome Cool Touch Dual Function Shower
AVVM107A

R.T. LARGE

ESTABLISHED 1969



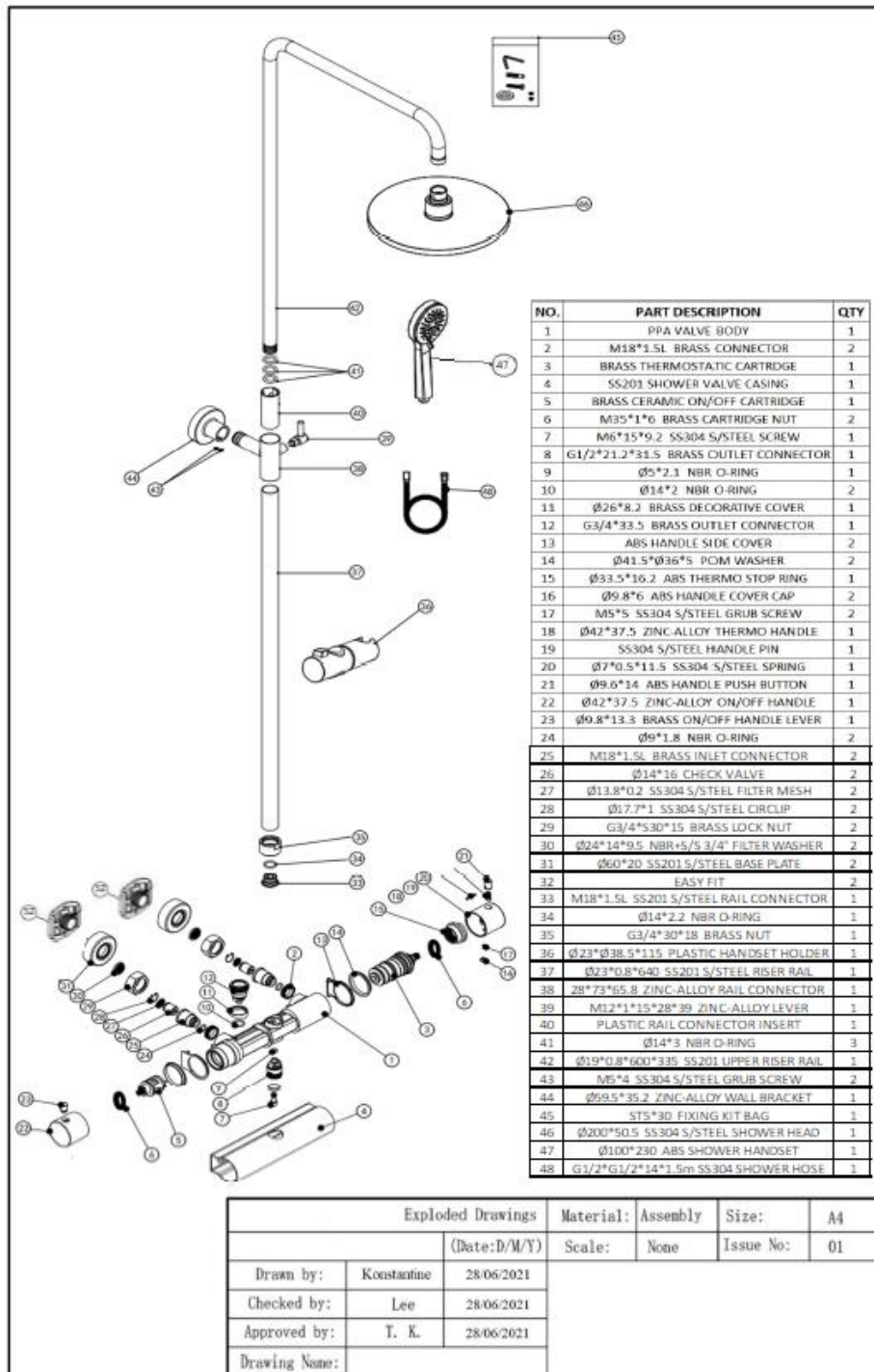
INFORMATION

Construction	Valve: High Performance Polyamide (PPA) Body & SS201 Stainless steel Casing; SS201 Stainless steel Riser rail & Base plates; Zinc-alloy Handles
Finishes	Chrome plated to BS EN 248
Product Type	Contemporary
Water Pressure	Min. 0.2 bar (handset) 0.5 bar (shower head), Max. 6.0 bar
Plumbing Systems	Suitable for all plumbing systems, Hot and Cold water pressure preferably balanced; Max. supply pressure differential requirement no greater than 5:1
Standards	Complies with BSEN 1111
Certification	WRAS approved and certified (valve only)
Cartridge	WANHAI Thermostatic cartridge & Integrated Ceramic disc valve diverter
Check valve	DN15 check valve (0.5-10 gpm)
Fitting	Easy Fitting water inlet connector; Brass G1/2" BSP Male bottom outlet & G3/4" BSP Male upper outlet connection
Packaging	93 x 43.5 x 36cm / carton (4 boxes), Dimension: 91 x 42 x 8.5cm / box
Guarantee	10 years against manufacturing faults (excluding serviceable parts)
Additional Information	<ol style="list-style-type: none"> 1. Temperature: Pre-set 38°C, with push button override to 48°C 2. Automatic shut off in the event of hot or cold water supply failure 3. COOL TOUCH Bar Valve technology 4. Ultra Slim Shower head: Chrome, SS304, Ø200mm, easy clean rubber nozzles 5. Shower handset : Chrome , ABS , 3 modes , rubber nozzles , G1/2" BSP 6. Handset holder : Chrome , ABS , adjustable height 7. Shower hose : Chrome , SS304 double interlock, 1.5m , Large Ø11mm bore 8. Riser rail : Chrome , SS201 Stainless steel , telescopic adjustable height

All Dimensions are in millimetres. The information contained on this page was correct at date of issue. Fitting dimensions are provided as a guide only. Some variation may occur due to manufacturing tolerances. We pursue a policy of continuing improvement in design and performance of our products and so reserve the right to change specifications without prior notice.

R.T. LARGE

ESTABLISHED 1969



Flow Rates (Litres per minute)

System Pressure	0.1 Bar	0.2 Bar	0.3 Bar	0.5 Bar	1.0 Bar	1.5 Bar	2.0 Bar	3.0 Bar	4.0 Bar	5.0 Bar
Handset	3.1	-	5.8	7.8	11.4	-	16.5	20.2	23.3	26.1
Showerhead	2.8	-	5.6	7.7	11.3	-	16.4	20.1	23.4	26.1

All Dimensions are in millimetres. The information contained on this page was correct at date of issue. Fitting dimensions are provided as a guide only. Some variation may occur due to manufacturing tolerances. We pursue a policy of continuing improvement in design and performance of our products and so reserve the right to change specifications without prior notice.